

Queen Margaret University

Green Travel Plan 2020



Queen Margaret University

EDINBURGH





Contents

1. Introduction
2. Health Matters
3. Travel Survey
4. Modal Split – Aims and Targets
5. Public Transport
6. Car Sharing
7. Cycling
8. Walking
9. Travel Clinics
10. Parking Policy and Regulations/Parking Permits
11. Useful Links

Please click
on the chapter
for more
information





Introduction

Transport is the most polluting sector in the UK, in order to achieve real reductions in CO2 a cultural shift needs to occur away from the private car. Reliance should not be on updating vehicular technology.

This document outlines the role of travel choice in the University's commitment to sustainability, and provides a working framework for the operational requirements of behaviour change in the context of our institutional strategic objectives of working towards a carbon neutral institution. As such, it will be regularly updated to reflect the evolution of a green travel culture, and the improvements which support it.

This is an interactive document which is intended to give you some help in identifying travel choices, journey times and comparative costs for travel to Queen Margaret university. There are many journey planning tools available online if you would like some more detail (links provided throughout the document).





Health Matters

QMU place a great deal of importance on the health of both staff and students. Research has clearly demonstrated the links between physical exercise and both physical and mental health, and one of the benefits of the green travel plan is in supporting active travel not just as a means of transport, but also as a form of exercise and relaxation.

Supporting healthy lifestyles is also the rationale behind flexible working and work/life balance initiatives, which have the added benefit of reducing unnecessary car use, with condensed hours and work from home days becoming standard.



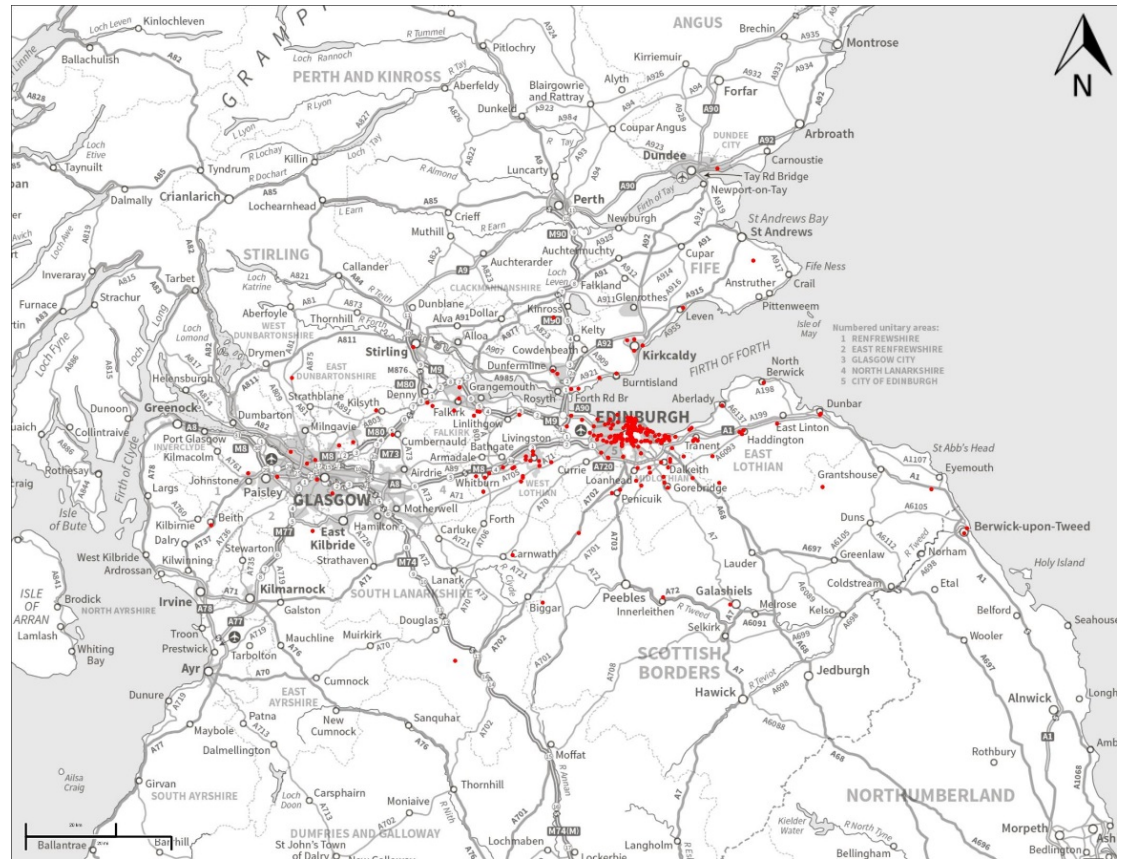


Travel Survey

Updates to the travel plan and allied parking policy are a result of travel surveys which are taken each year as part of the monitoring and evaluation process. The 2019/20 survey included 40 questions regarding the current travel patterns of students and staff and the potential for change.

There were 367 respondents to this survey, both students and staff. The annual surveys provide an important consultative tool to ensure that the Green Travel Plan (GTP) takes into account not only legislative changes, but also the comments and suggestions of the QMU community.

As can be seen, students and staff travel from all over Scotland.





Modal Split: Travel Survey 2019/20

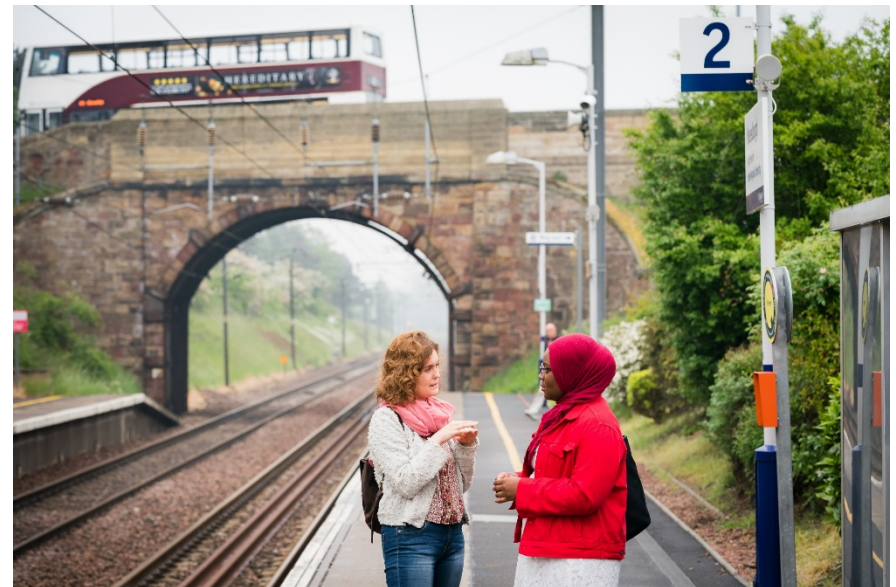
Aims and Targets

It is the aim of the university to maintain its pioneering status, being an exemplar of sustainable best practice in Higher Education institutions. The aim of the GTP is to support the university in this strategy by encouraging sustainable travel choice and delivering a decrease in single occupancy car use across the university community.

Given the proximity of Musselburgh railway station to the campus, it is not surprising that rail is the second most used mode of transport in the 2019/20 Travel Survey (26%). With bus stops on campus, bus travel was the second most popular use at 24%.

There are a number of limiting factors restricting the growth of rail travel, this includes timetabling issues and individuals relying on connecting services. The Newcraighall station has greater capacity but is a less attractive option, requiring a 20 minute walk.

QMU has joined the Rail Action Group for East Scotland (RAGES) and will continue to lobby at the highest level for service improvements.

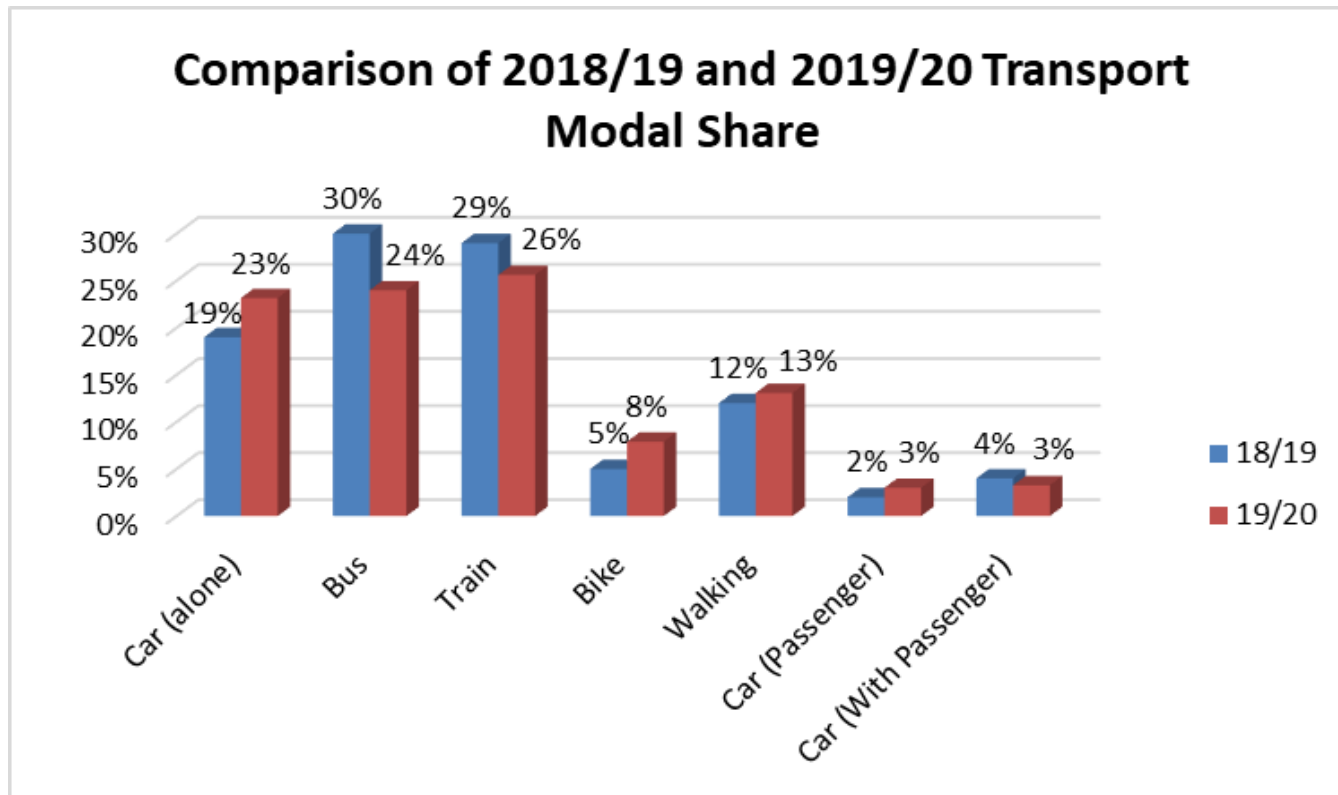




Modal Split: Travel Survey 2019/20

Aims and Targets

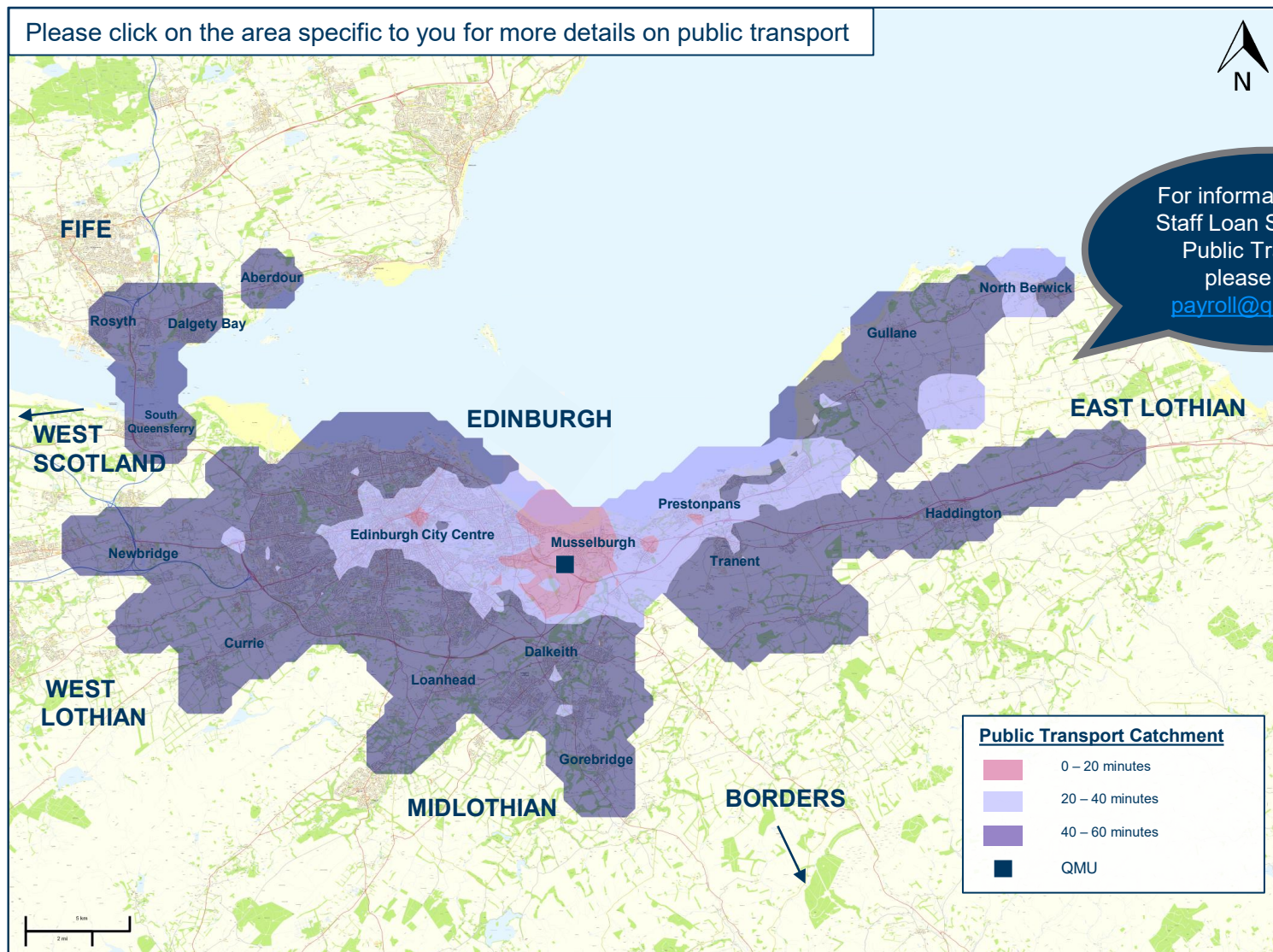
Below is the comparison of mode share results between the 2018/19 and 2019/20 Travel Survey. Public transport accounts for half of the mode share. The active travel mode share is at its highest level at 21%.. This change may be due to the increased focus of active travel on campus. The single occupancy driving mode share, although higher than last year is still a drop from the 2017/18 levels. This shows positive trends in sustainable mode share for Queen Margaret University.





Public Transport

Queen Margaret University is reachable from a number of areas, as can be seen in the public transport catchment map Below, these areas include: Fife, Edinburgh, Currie, Newbridge, Dalkeith, Loanhead, Gorebridge and a number of areas within East Lothian.





Edinburgh

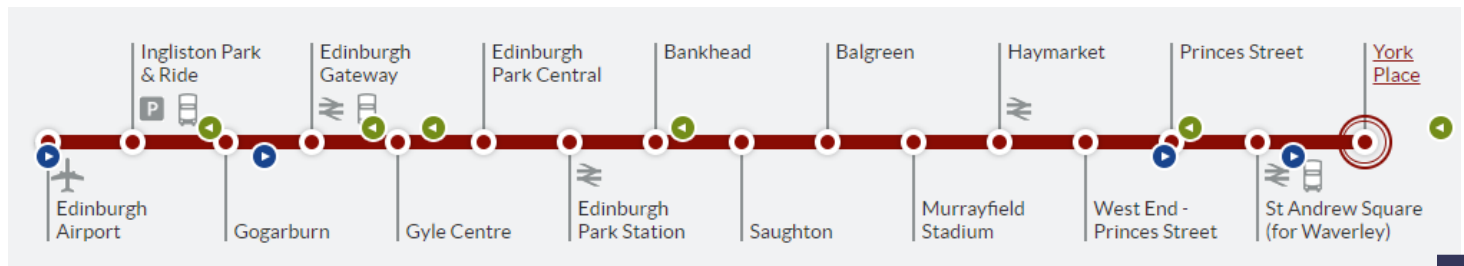
Bus Travel click here for Lothian Bus timetables				correct as of January 2020	
Origin	Service Number	Main Stops	Typical Journey Time	Typical return Cost	Typical Monthly Cost
Clovestone	30	<ul style="list-style-type: none"> Longstone West End, Lothian Rd Commonwealth Pool Fort Kinnaird 	1 h 20 minutes	£3.60	£56.00
Riccarton	45	<ul style="list-style-type: none"> Riccarton Campus Currie Toll Tollcross Meadowbank House 	1 h 40 minutes	£3.60	£56.00

Train Travel (includes walking times)				Correct as of Jan 2018	
Origin	Service Name	Typical Journey Time	Typical return Cost	Typical Monthly Cost	
Waverley	To Musselburgh	10 minutes	£4.40	£70.30	
Haymarket	To Musselburgh	24 minutes	£4.40	£70.30	
Shawfair	To Newcraighall	30 minutes	£6.60	£100.70	
Slateford	To Musselburgh	32 minutes	£6.80	£91.40	
South Gyle	To Musselburgh	31 minutes	£5.00	£81.10	
Edinburgh Park	To Musselburgh	33 minutes	£5.20	£84.10	
Wester Hailes	To Musselburgh	37 minutes	£7.00	£94.90	
Edinburgh Gateway	To Musselburgh	39 minutes	£5.40	£82.60	

Edinburgh Tram

Single: £1.80
Return: £3.60
Month Cost: £56.00

(City Zone Prices)



For more information on travel from Edinburgh to Queen Margaret University, please use the following links: Bus - lothianbuses.co.uk/ and <http://www.horsburghcoaches.com/>, Train - www.scotrail.co.uk/ and Tram - edinburghtrams.com/. All Typical Journey Times are based on a week-day 9 am.





Fife

Bus Travel – to Edinburgh City Centre for link to QMU see Edinburgh				correct as of January 2018
Origin	Service Number	Typical Journey Time	Typical return Cost	Typical Monthly Cost
Ferry Toll P&R – Edinburgh Bus St	X55, X56, X58	38 minutes	£10.40	£115.40
Dalgety Bay – Edinburgh Bus St	X58	1 h	£10.40	£115.40
Rosyth – Edinburgh Bus St	X55	1 h 3 minutes	£10.40	£115.40
Dunfermline – Edinburgh Bus St	X5	1 h 10 minutes	£10.40	£115.40

Train Travel (includes walking times)				Correct as of Jan 2018
Origin	Service Name	Typical Journey Time	Typical return Cost	Typical Monthly Cost
Inverkeithing	To Musselburgh	46 minutes	£11.40	£172.10
Rosyth	To Musselburgh	50 minutes	£12.30	£176.70
Aberdour	To Musselburgh	1 h 12 minutes	£13.80	£196.70
Dunfermline Town	To Musselburgh	59 minutes	£13.80	£196.70

For more information on travel from Edinburgh to Queen Margaret University, please use the following links: Bus - www.stagecoachbus.com, Train - www.scotrail.co.uk/. All Typical Journey Times are based on a week-day 9 am.

West Lothian

Bus Travel – to Edinburgh City Centre for link to QMU see Edinburgh				correct as of January 2018
Origin	Service Number	Typical Journey Time	Typical return Cost	Typical Monthly Cost
Newbridge – Edinburgh Waverley	X21, X38	30 minutes	£4.00	£51.00
Livingston – Edinburgh Waverley	X27, X28	1 h 13 minutes	£8.20	£93.00
Linlithgow – Edinburgh Waverley	38A	1 h 16 minutes	£11.00	£155.00

Train Travel (includes walking times)				Correct as of Jan 2018
Origin	Service Name	Typical Journey Time	Typical return Cost	Typical Monthly Cost
Linlithgow	To Musselburgh	36 minutes	£12.70	£187.10
Livingston South	To Musselburgh	40 minutes	£13.10	£195.10
Livingston North	To Musselburgh	45 minutes	£13.10	£194.40
Currie (Curriehill St)	To Musselburgh	52 minutes	£7.10	£101.00

For more information on travel from Edinburgh to Queen Margaret University, please use the following links: Bus - www.firstgroup.com/south-east-and-central-scotland, Train - www.scotrail.co.uk/. All Typical Journey Times are based on a week-day 9 am.





East Lothian

Bus Travel				correct as of January 2018
Origin	Service Number	Typical Journey Time	Typical return Cost	Typical Monthly Cost
Haddington	111*	1 h 20 minutes	£6.00- free for students	£120

Train Travel (includes walking times)				Correct as of Jan 2018
Origin	Service Name	Typical Journey Time	Typical return Cost	Typical Monthly Cost
Prestonpans	To Musselburgh	11 minutes	£5.20	£79.50
Longniddry	To Musselburgh	16 minutes	£6.70	£94.90
Drem	To Musselburgh	25 minutes	£9.80	£145.20
North Berwick	To Musselburgh	29 minutes	£11.60	£165.90
Dunbar	To Musselburgh	43 minutes	£18.70	£184.00

For more information on travel from Edinburgh to Queen Margaret University, please use the following links: Bus - <http://www.prentice.info/111.html>, Train - www.scotrail.co.uk/. All Typical Journey Times are based on a week-day 9 am. *This bus now stops at the Clayknowes Road.

Midlothian

Bus Travel – to Edinburgh City Centre for link to QMU see Edinburgh				correct as of January 2018
Origin	Service Number	Typical Journey Time	Typical return Cost	Typical Monthly Cost
Bonnyrigg - Edinburgh Waverley	31	52 minutes	£3.60	£56.00
Rosewell - Newcraighall	49	59 minutes	£3.60	£56.00
Penicuik - Edinburgh Waverley/ princes Street	15, 37, 47	55 minutes	£3.60	£56.00

Train Travel (includes walking times)				Correct as of Jan 2018
Origin	Service Number	Typical Journey Time	Typical return Cost	Typical Monthly Cost
Eskbank	To Newcraighall	33 minutes	£5.10	£70.30
Newtongrange	To Newcraighall	36 minutes	£5.90	£83.80
Gorebridge	To Newcraighall	40 minutes	£7.00	£101.40

For more information on travel from Edinburgh to Queen Margaret University, please use the following links: Bus - <http://www.lothianbuses.co.uk>, Train - www.scotrail.co.uk/. All Typical Journey Times are based on a week-day 9 am.





Borders

Bus Travel - to Edinburgh City Centre for link to QMU see Edinburgh					correct as of January 2018
Origin	Service Number	Main Stops	Typical Journey Time	Typical return Cost	Typical Monthly Cost
Jedburgh – Edinburgh Bus St	51	<ul style="list-style-type: none"> • Newtown • Lauder • Dalkeith 	2 h	£12.50	£59.20
Kelso – Edinburgh Bus St	52	<ul style="list-style-type: none"> • Clintmains • Newtown • Lauder • Dalkeith 	2 h 8 minutes	£12.50	£59.20
Galashiels – Edinburgh Bus St	X62	<ul style="list-style-type: none"> • Peebles • Eddleston • Penicuik 	2 h 3 minutes	£12.50	£55.20
Peebles - Haymarket	X70	<ul style="list-style-type: none"> • Eddleston • Leadburn • Auchterdinny 	1 h 34 minutes	£9.60	£42.40
Hawick – Edinburgh Bus St	X95	<ul style="list-style-type: none"> • Melrose & Galashiels • Stow • Middleton • Eskbank Toll 	2 h 25 minutes	£13.40	£59.20

Train Travel (includes walking times)				Correct as of Jan 2018	
Origin	Service Name	Typical Journey Time	Typical return Cost	Typical Monthly Cost	
Stow	To Newcraighall	58 minutes	£11.70	£173.60	
Galashiels	To Newcraighall	1 h 7 minutes	£14.30	£212.80	
Tweedbank	To Newcraighall	1 h 11 minutes	£14.90	£222.40	

For more information on travel from Edinburgh to Queen Margaret University, please use the following links: Bus - <https://www.bordersbuses.co.uk/timetables>, Train - www.scotrail.co.uk/. All Typical Journey Times are based on a week-day 9 am.





West Scotland

Bus Travel - to Edinburgh City Centre for link to QMU see Edinburgh				correct as of January 2018
Origin	Service Number	Typical Journey Time	Typical return Cost	Typical Monthly Cost
Falkirk – Edinburgh Waverley	38A	1 h 41 minutes	£11.50	£155.00
Stirling – Shandwick Place	900	1 h	£11.60	£157.30
Glasgow – Shandwick Place	900	1 h 16 minutes	£10.00	£154.20

Train Travel (includes walking times)				Correct as of Jan 2018
Origin	Service Name	Typical Journey Time	Typical return Cost	Typical Monthly Cost
Falkirk High	To Musselburgh	47 minutes	£15.30	£231.20
Stirling	To Musselburgh	1 h 21 minutes	£19.00	£321.10
Glasgow – Queen St	To Musselburgh	1 h 7 minutes	£30.30	£419.00
Croy	To Musselburgh	1 h 9 minutes	£21.20	£328.80
Greenfaulds	To Musselburgh	1 h 37 minutes	£29.50	£454.30

For more information on travel from Edinburgh to Queen Margaret University, please use the following links: Bus - <https://www.firstgroup.com> and <http://www.citylink.co.uk>, Train - www.scotrail.co.uk/. All Typical Journey Times are based on a week-day 9 am.



Bus Connections with Walking & Cycle Routes to QMU



Bus Connections with Walking & Cycle Routes to QMU



Lothian

For more information on services visit www.lothianbuses.co.uk or download the TfE app

- 2 Gyle Centre - Haymarket - Surgeons' Hall - Prestonfield - Craigmillar - Niddrie - **The Jewel** - **Asda The Jewel**
- 4 Hillend - Slateford - Haymarket - City Centre - Abbeyhill - Northfield - Bingham - **The Jewel** - **Asda The Jewel**
- 5 Hunter's Tryst - Morningside - City Centre - Abbeyhill - Northfield - Mountcastle - **Asda The Jewel**
- 26 Clerwood - Haymarket - City Centre - Abbeyhill - Portobello - **Ship Inn** - Musselburgh - Prestonpans - Seton Sands or Tranent
- 44 Balerno - Currie - Haymarket - City Centre - Abbeyhill - **Edinburgh College (Brunstane)** - **Ship Inn** - Musselburgh - Wallyford (Whitecraig peak times)
- 48 Gorebridge - Mayfield - Dalkeith - Sheriffhall Park & Ride - Royal Infirmary - Niddrie - **Fort Kinnaird (west)**
- 49 Rosewell - Bonnyrigg - Dalkeith - Royal Infirmary - City Centre - Leith - Lochend - Portobello - **The Jewel** - **Fort Kinnaird (east)**
- 400 Airport - Gyle Centre - Wester Hailes - Oxgangs - Fairmilehead - Gracemount - Gilmerton - Royal Infirmary - Niddrie - **Fort Kinnaird (west)**

EastCoastbuses

For more information on services visit www.eastcoastbuses.co.uk or download the TfE app

- 104 City Centre - Abbeyhill - **The Jewel** - Wallyford - Tranent - Macmerry - Haddington
- 106 Fort Kinnaird - **Newhailes Road** - Ship Inn - Musselburgh - Levenhall - Tranent - Macmerry - Haddington (some journeys to Dunbar)
- 113 West Granton - Crewe Toll - City Centre - Abbeyhill - **Edinburgh College (Brunstane)** - **Ship Inn** - Musselburgh - Tranent - Ormiston - Pencaitland
- 124 City Centre - Abbeyhill - Portobello - **Ship Inn** - Musselburgh - Prestonpans - Longniddry - Aberlady - Gullane - North Berwick
- X5 Express: City Centre - Abbeyhill - **The Jewel** - A1 - Longniddry - Aberlady - Gullane - North Berwick
- X7 Express: City Centre - Abbeyhill - **The Jewel** - A1 - Haddington - East Linton - Dunbar

Direct Bus services and connections to QMU

- 30 Clovenstone - Longstone - City Centre - Surgeons' Hall - Prestonfield - Niddrie - **Fort Kinnaird (east & west)** - **QMU** - **Ship Inn** - Musselburgh
Lothian service 30 serves QMU campus every 10-12 minutes daytime and every 15-20 minutes evenings (N30 every 60 minutes at night) with connections to other services at:

★ Fort Kinnaird (west) with services 48 & 400 ★ Fort Kinnaird (east) with service 49 ★ Ship Inn with services 26, 44, 113 & 124

- 45 Riccarton - Currie - Colinton - Br...
- Lothian service 45 serves QMU ca*



Car Sharing

One of the main aims of the GTP is to reduce the level of single occupancy vehicles travelling to QMU. This aim is not focused on discouraging car use but rather encouraging people to travel more sustainably. If staff and students still choose to travel by car they will be encouraged to car share rather than to not drive.

Car sharing offers many benefits to individuals, these include:

- **Save money** by sharing travel costs (fuel and parking)
- **Reduce the stress** of driving by sharing the weight with others
- **Reduces congestion** by contributing to less cars on the roads
- **Be Sustainability** and **help the environment** as car-sharing can reduce CO² emissions.

Don't miss this years' National Liftshare Week in October 2018!



liftshare

**Would you be interested in finding someone to share your journey with to Queen Margaret University?
Use the following link:**

<https://liftshare.com/uk/community/queen-margaret-university>





FOR STAFF ONLY

The University has use of two Enterprise Car Club vehicles:

- Ford Fiesta – petrol
- Nissan Leaf – electric

You can take advantage of using these vehicles now by registering at the following link: [10101552 Queen Margaret University Join Link](#)

Why not give it a go, it is a cost effective alternative to taxis. It may also reduce the need for you to use your own vehicle, if you need to travel for an offsite meeting.



Cycling

Cycling is a great way of getting to QMU! The University is located within close proximity to the **National Cycle Route 1**, which connects to the Centre of Edinburgh and the **Route 76** which runs east through Prestonpans, Haddington and Dunbar.

The following facilities are available to cyclists on the campus and surrounding:

- **Lockers** (located on level 1 of the main academic building)
- **Parking** (3 secured locker sheds at accommodation and 1 for regular cyclists)
- **Secure bike lockers** (installed behind the bus stop and at accommodation)
- **Showers & changing rooms** (located on level one in main building and available in the sports centre)
- **Emergency maintenance kits** (available at reception)
- **Dr.Bike sessions** (15 minutes bicycle repair for minor problems, monthly)



Queen Margaret University has a Bicycle User Group, to join this [click here](#). However QMU is more active through Instagram- @qmucycle and through the facebook pages, [cycling connections](#) and facebook group [Cycling at Queen Margaret University](#)

The following links provide cycle maps of the surrounding area:

[Edinburgh City Council Cycle Maps](#), [East Lothian Cycle Maps](#), [Sustrans Cycle Network Map](#) and [Cycle Streets Journey Planner](#).

Please click the arrow for typical cycle journey times

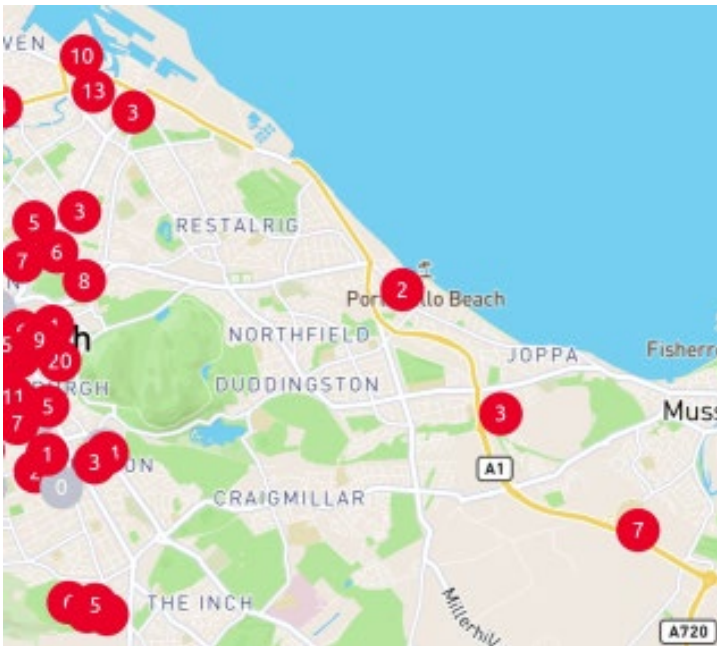


Just Eat Cycles

New for this semester we have a fleet of Just Eat Cycles.

Using the app you can find a bike, unlock it and find where to deposit it again at the end.

Students are eligible to get an annual pass for half price!



1. Find

Use the app to find a bike near you.

2. Bike

Use the app to unlock a bike, and ride for up to one hour.

3. Park

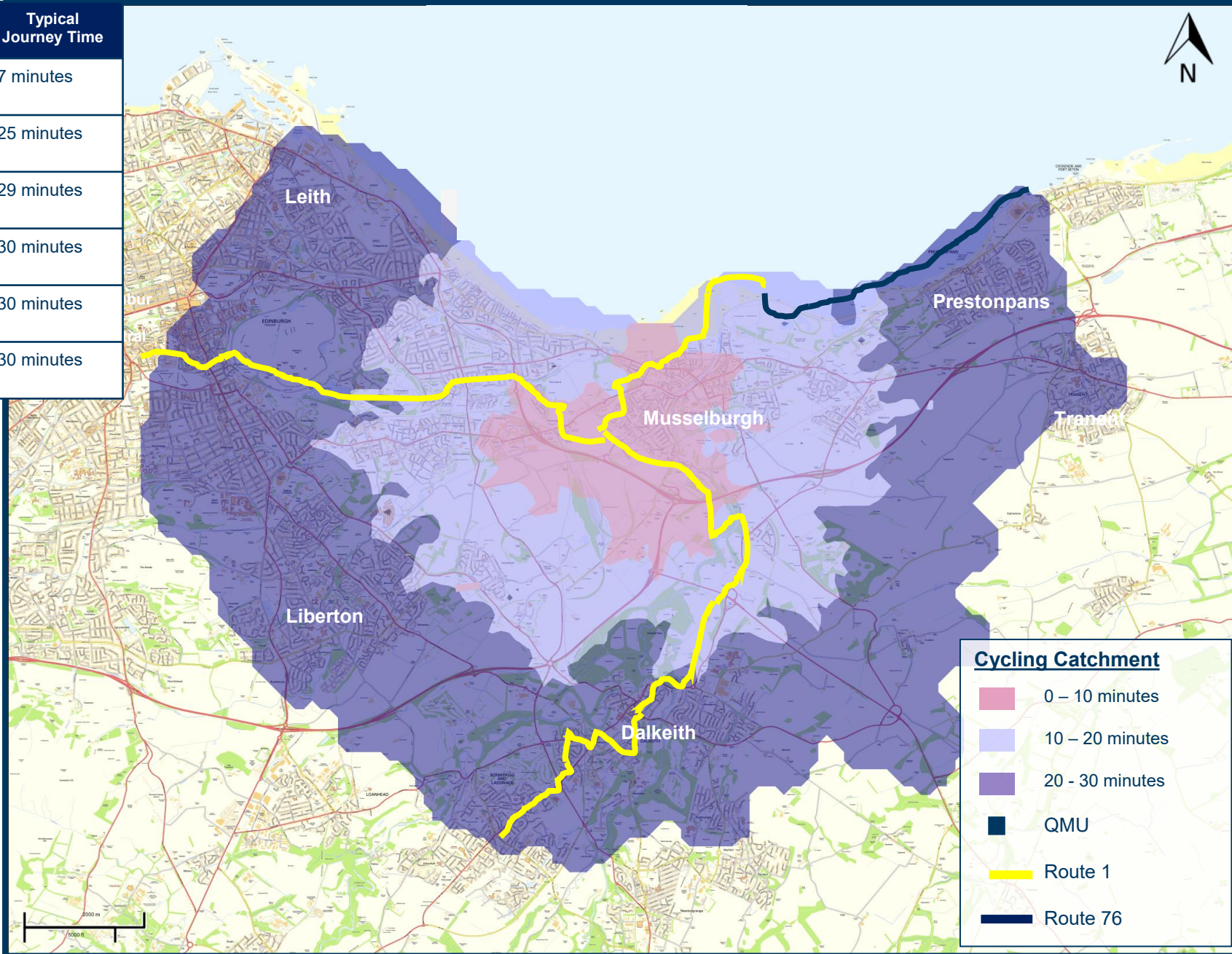
Park the bike in one of 67 stations.

1 hour= £1.50

1 Day= £3.00



Location	Typical Journey Time
Musselburgh Centre	7 minutes
Prestonpans	25 minutes
Dalkeith	29 minutes
Liberton	30 minutes
Tranent	30 minutes
Leith	30 minutes



Cycle Connections Bike Hire Scheme & E-bikes



CYCLE CONNECTIONS

The university has a fleet of over 20 hybrid bikes which can be , these are available for long-term hire. This is a healthier and cheaper alternative to using the car, bus or train services. The following tariffs apply to the bike hire scheme:



Period	Students	Staff
During Semester	£40 per semester	-
Summer	£15 per month	£15 per month

*all hires include a £50 deposit that will be returned.

Queen Margaret University has 2 electric bikes for hire to staff. These can be hired for a short term hire during the normal working hours (Mon-Fri, 9am to 5pm).

These are **FREE** for university staff to use and are a perfect alternative to using taxis and cars for work-related travel.

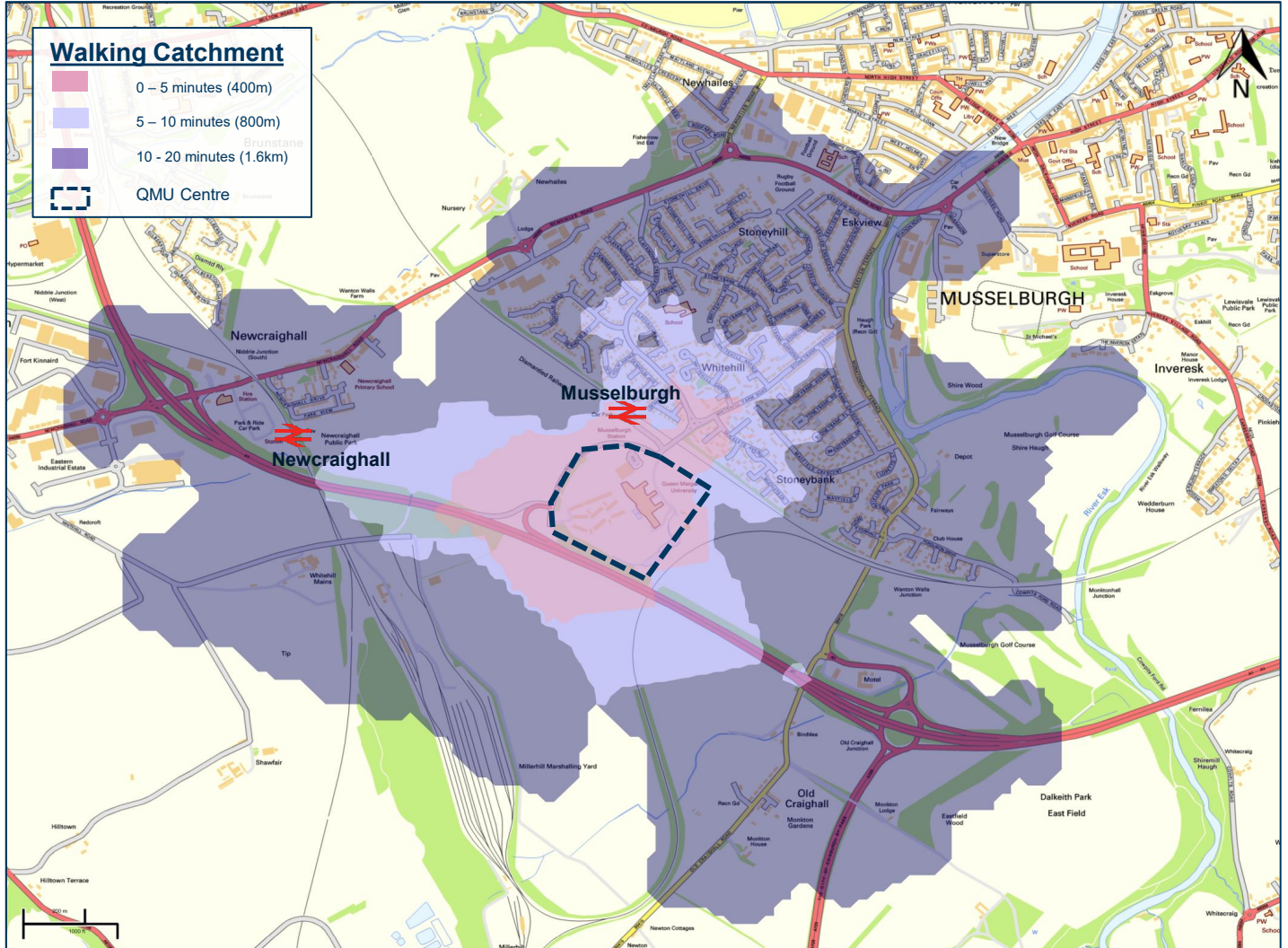
For more information please contact: assist@qmu.ac.uk



Walking

Queen Margaret is within walking distance of a number of local residential areas, please see the table below for walking distances.

Location	Typical Journey Time
Musselburgh Train Station	5 minutes
Whitehill	10 minutes
Stoneybank	13 minutes
Stoneyhill	15 minutes
Old Craighall	20 minutes
Newcraighall	20 minutes
Newcraighall Train Station	20 minutes
Centre of Musselburgh	20 minutes



For more information on walking within and around Queen Margaret University, please visit:
<https://www.qmu.ac.uk/location-and-getting-here/get-to-qmu-by-bike-or-foot/>



Travel Clinics

Keep an eye out for when Dr Bike will be on campus to do maintenance checks on bicycles!

There will be bike maintenance sessions held on the University's campus within the main courtyard. Dates of these will be posted in the following locations:

- The Cycle Connections Facebook page - <https://www.facebook.com/cycleconnections>
- Student Website - <http://www.browzer.co.uk/qmu/>
- Cafeteria virtual display boards
- Poster at bicycle stands

The Dr Bike sessions will be held next to the bicycle racks outside the Craighall and Student Union Buildings, please see the map for a detailed location.



For more information on Dr Bike, please [click here](#)



Parking Policy and Regulation/Parking Permits

Use of the QMU car park is restricted to permit holders only between the following dates and times:

8th October 2020 – 31st May 2021 (Monday to Friday, 08:00am – 05:30pm)*

*if outside these times then there is no permit required.

General permits costs are determined on the vehicle engine carbon profile, the are:

CO2 Emission Figure	Cost Per Year	Single Semester (Student)
Up to 120 g/km	£51.00	£28.50
121-150 g/km	£87.00	£48.50
151-165 g/km	£133.00	£74.00
166-185 g/km	£200.00	£111.00
Over 185 g/km	£256.00	£142.00



Disabled permits: those in possession of a valid blue badge do not require a permit.

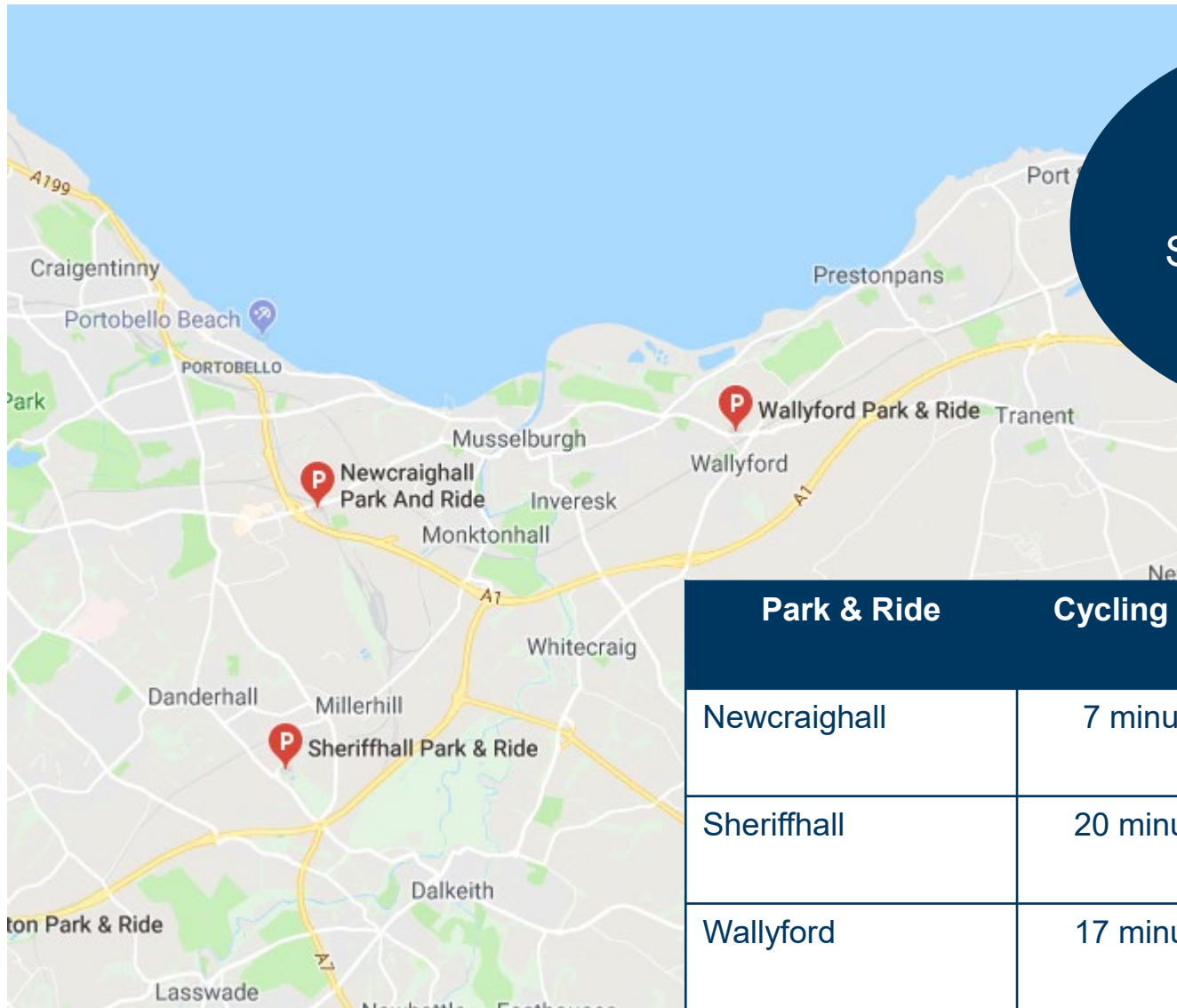
Shorter permits will be available via a new app

For more information, please visit <https://www.qmu.ac.uk/location-and-getting-here/parking-on-campus/> or contact parking@qmu.ac.uk.

QMU has their own Liftshare page. To find people to share with please visit <https://liftshare.com/uk/community/queen-margaret-university>



Park & Ride Walking Distances and Times



The Newcraighall, Wallyford and Sheriffhall Park & Rides all have **FREE** parking

Park & Ride	Cycling Time	Walking Time
Newcraighall	7 minutes	21 minutes
Sheriffhall	20 minutes	-
Wallyford	17 minutes	-



Useful Links

Walking & Cycling

<https://www.qmu.ac.uk/location-and-getting-here/get-to-qmu-by-bike-or-foot/>

http://www.edinburgh.gov.uk/info/20087/cycling_and_walking/1475/explore_quietroutes

<http://www.visiteastlothian.org/activities/cycling>

<https://www.sustrans.org.uk/ncn/map>

<https://www.cyclestreets.net/journey/>

<http://www.scotbug.com/QMUBUG/>

<https://www.facebook.com/cycleconnections/>

Public Transport

<https://www.scotrail.co.uk/>

<http://edinburghtrams.com/>

<https://lothianbuses.co.uk/>

<https://www.stagecoachbus.com/>

<https://www.firstgroup.com/south-east-and-central-scotland>

<http://www.prentice.info/111.html>

<http://www.horsburghcoaches.com/>

<https://www.bordersbuses.co.uk/timetables>

Car Share

<https://liftshare.com/uk/community/queen-margaret-university>

