

TRAVELING TO CAMPUS

OUR AIM

We aim to enable everyone to travel as safely and sustainably as possible by keeping our staff and student population well informed of their options. We want to ensure everyone is supported and confident about their journey choice.



LOOKING AFTER OUR ENVIRONMENT

Transport is the largest polluting sector in the UK so it's important to think about how we can reduce our carbon footprint and make responsible transport choices.



CAN YOU MEET VIRTUALLY?

You'll need to travel in for lectures but look for opportunities to collaborate with others virtually online. If you do need to travel, take precautions to keep yourself and others safe.

If you feel at all unwell, please do not travel.

CHANGING IT UP

You'll find information about all modes of travel in this leaflet. but we understand you won't always be able to travel by your preferred mode. We would encourage you to consider trying out different modes when you're able, e.g, if the weather's nice and you don't need to do the school run, why not try cycling?



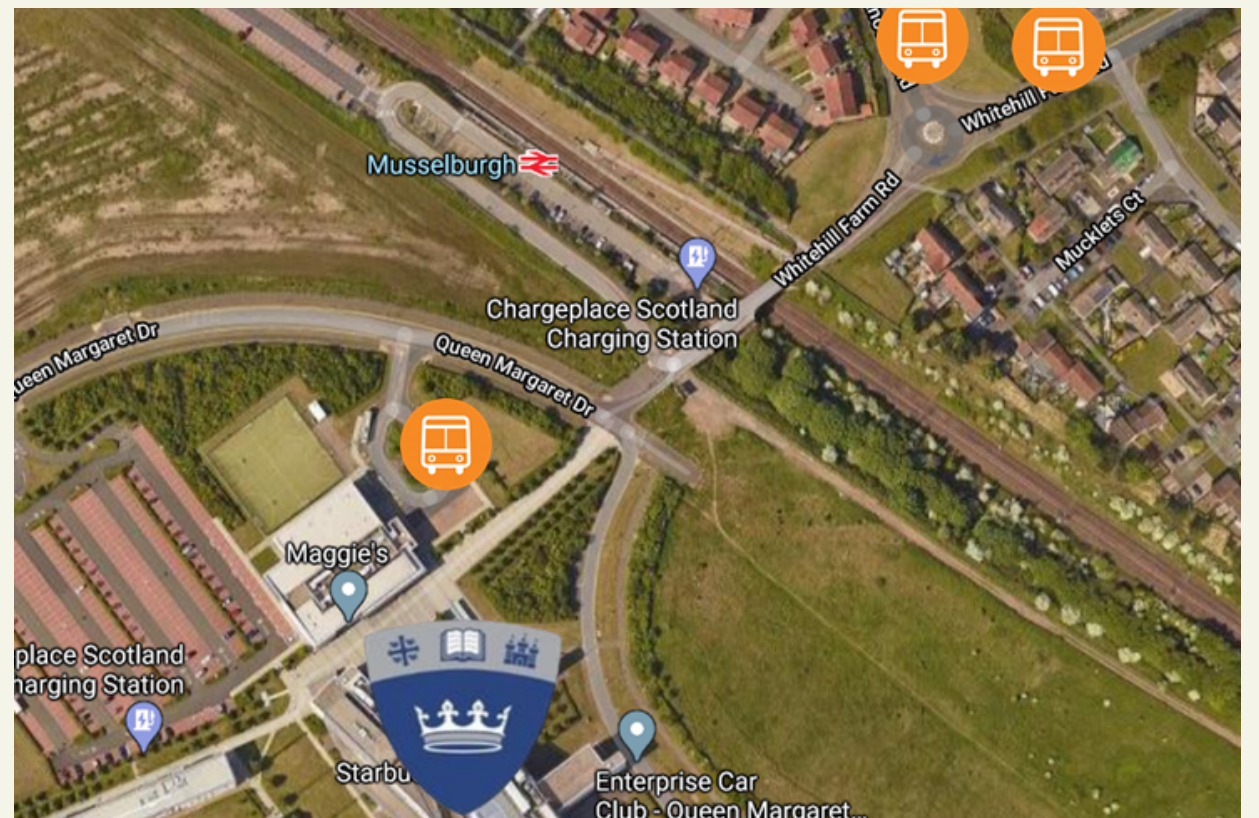
BUS TRAVEL



STAYING SAFE

Buses are being thoroughly cleaned and measures are in place for distancing to ensure travel is safe.

Wash your hands when possible and remember you must wear a face mask on public transport.



SERVICES

Lothian buses service 30 is every 10 minutes from campus. Prentice 111 is available hourly within a short walk. Several other services are available to connect with at Fort Kinnaird. For more information on Lothian buses, go to- www.lothianbuses.com

Lothian buses service 45 may be available from campus subject to change



PRENTICE BUSES

QMU students are able to travel for free using Prentice bus services 111, 118, 108! Just show the driver your student card. For more information about routes and timetables visit- www.prentice.info

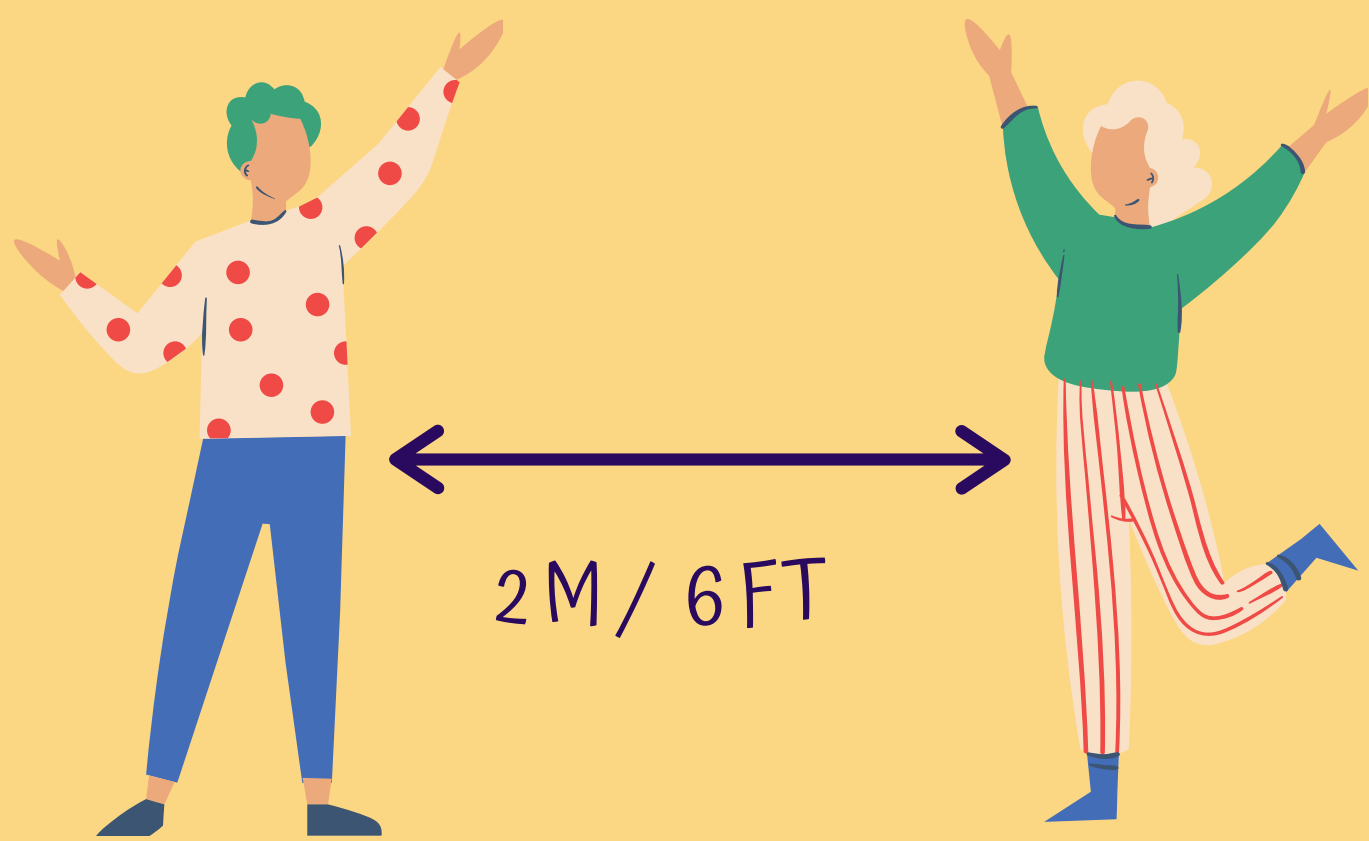


TAP AND CAP

When you pay by contactless card on Lothian buses they automatically cap your spend to the price of a day ticket. This means unlimited travel around the city for only £4.50! Season tickets are also available at a cheaper student rate.



TRAIN TRAVEL



STAYING SAFE

Trains are being thoroughly cleaned and measures are in place for distancing to ensure travel is safe.

Keep 2m apart, wash your hands when possible and remember you must wear a face mask on public transport.



SERVICES

Musselburgh station is right next to QMU and runs regular services to North Berwick and Edinburgh City Centre which can be reached in under 10 minutes.

Newcraighall can be reached in a 20 minute walk and offers services to Tweedbank and Edinburgh City Centre.

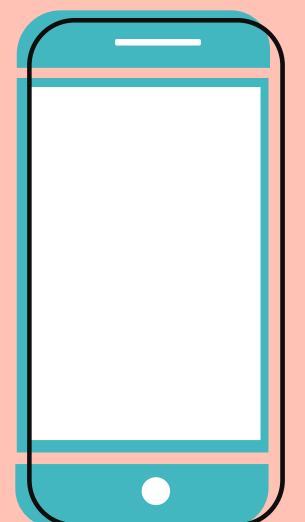
For more information visit-
www.scotrail.co.uk



BIKES ON TRAINS

If you don't live in walking distance of a train station or don't want to walk from Newcraighall then why not consider cycling? You can take your bike on the train with you and store it on campus.

For long distance routes you need to reserve a space on the train for your bike.



SMART CARD

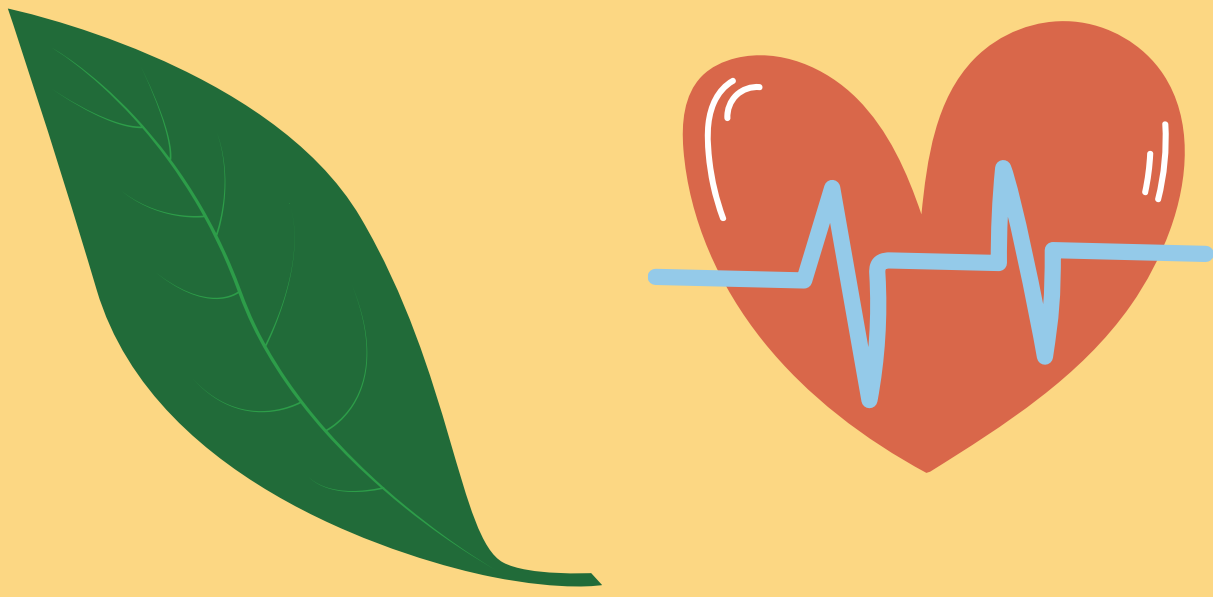
Scotrail offer a free Smartcard.

The Smartcard allows the fast purchase of tickets through the mobile app or at the station.

The Smartcard allows you to purchase tickets at an additional discounted rate, so it is worth getting to save those ££.



BY BIKE



WHY CYCLE?

- Cycling is free!
- Studies show cycling commuters have 45% lower risk of developing cancer
- Cycling is good for the environment
- Cycling makes us happier
- Cycling makes us healthier



CYCLE ROUTES

QMU is located on National Cycle Route 1 which provides a route into Edinburgh. The City Centre can be reached in just 30 minutes by bike!

National Cycle Route 76 is less than a minute away and provides a route into Dalkeith and beyond. you can find more routes here-

<https://www.edinburgh.gov.uk/cycling-walking/explore-quietroutes/1>



FACILITIES

Dr Bike offer free bike services, they are on campus the last Thursday morning of every month! Showers and lockers will be subject to new rules but still available in the sport facilities building just tell the team you've cycled in. Opening hours may be restricted so check at the sports reception for any changes.

Get in touch with Cycle Connections to borrow bike lights/tools/pump.

Just Eat Cycles have a station on campus with cheap student hire.



CYCLE CONNECTIONS

CYCLE CONNECTIONS

The University has a fleet of new hire bikes that can be borrowed for £40 a semester or £10 a month with a helmet lock and lights!

Events and giveaways are a regular, so to keep up with what's happening on campus follow us on social media.



Facebook- @cycleconnections



Instagram- @qmucycle



ON FOOT



WHY WALK/RUN

- Traveling on foot is free!
- Walking can be a great chance to de-stress and chat to friends
- Walking/running is good for the environment
- Walking/running makes us happier
- Walking/running makes us healthier



ROUTES

QMU is located on National Cycle Route 1 which is a shared use path, past campus into Edinburgh.

From campus you can easily walk to the coast too, perfect for a sunny day.



FACILITIES

Showers and lockers are available in the sport facilities, just tell the team you've walked/ran in. A one in one out policy will be in place for showers and changing in the main campus.

Reflective bands are available to help you be seen at night, just contact Cycle Connections!

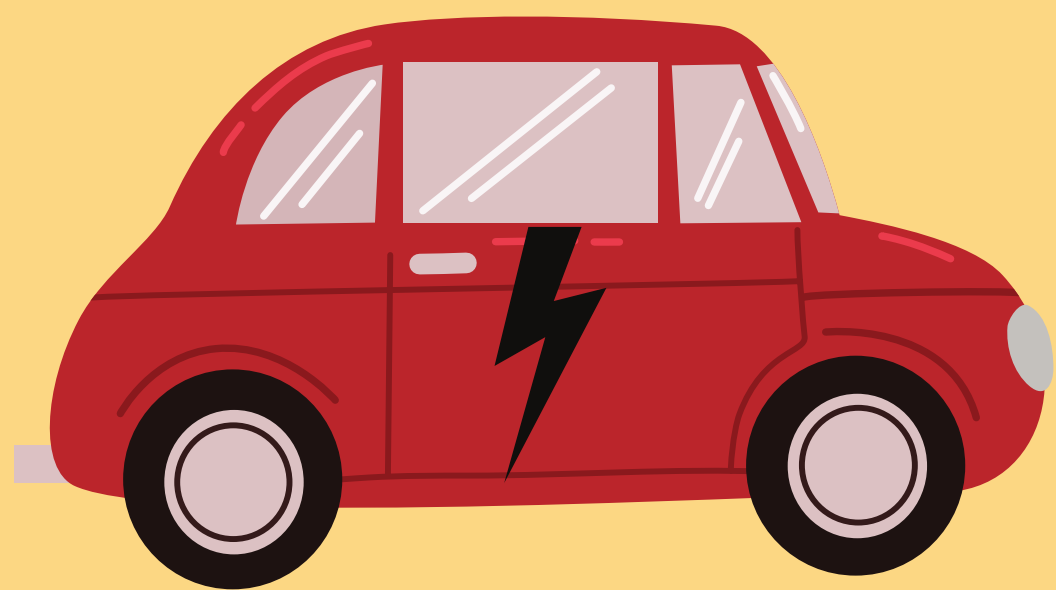


MULTI-MODAL

If you want to take public transport but can't get a direct route, consider walking/running part of the way. It's a good way to add interest to your commute and keep healthy. Get off the bus a few stops early to get even more benefit!



BY CAR



DRIVING HERE

QMU can be accessed by car via the A1. We encourage you to travel by alternative means if possible as our car park is limited and we are committed to reducing our carbon footprint.

As well as car club spaces there are electric vehicle charging bays.



CAR CLUB

Enterprise Car Club offers cheap car hire all over the city. It's a great way to easily have access to and use a car without having to own one! Car club have implemented a strict cleaning regime to ensure the safety of its users.

Rentals can be for as little as an hour and can be done on your phone. Check them out here-

www.enterpriseclub.co.uk



PERMITS

To understand future travel demands due to COVID-19 we are implementing short duration permits for students in the early stages of semester. This may be subject to change, and users will be notified of any changes. Short duration permits will be available for students.

Staff can buy day or annual permits, cost depending on the cars emissions.

To register for an account go here-

<https://permits.paysmarti.co.uk/acct/qmu/>



CAR SHARING

Car sharing is a convenient, affordable and relatively safe way to commute. When car sharing try to only share with one other and the same person each time. You should also wear face coverings and keep windows open.

To find someone to share with visit-
<https://liftshare.com/uk/community/queen-margaret-university>

