

Find the course for you

Complete the word search to discover the courses we offer!

- Acting for Stage and Screen
- Business Management
- Costume Design
- Diagnostic Radiography
- Dietetics
- Drama
- Education Studies
- Events and Festival Management
- Film and Media
- Media and Communications
- Nursing
- Nutrition
- Occupational Therapy
- Paramedic Science
- Physiotherapy
- Podiatry
- Psychology
- Psychology and Sociology
- Public Sociology
- Speech and Language Therapy
- Theatre and Film
- Therapeutic Radiography

STEP
into
QMU

Y N B O R A T A T Y R Q T A S
G F U C X D H E N P S L H C M
O K S C E Y E S E A E Z E T O
L J I U T L A P M R I J R I I
O S N P B N T A E E D L A N T
I Z E A Y X R H G H U M P G A
C Y S T P D E B A T T I E F C
O H S I A M A B N O S V U O I
S P M O R Z N T A I N A T R N
D A A N E T D L M S O X I S U
N R N A H D F X L Y I Y C T M
A G A L T O I G A H T T R A M
Y O G T E Q L N V P A C A G O
G I E H G E M I I J C V D E C
O D M E A C C S T Z U F I A D
L A E R U N U R S R D W O N N
O R N A G E U U E U E Z G D D A
H C T P N I S N F N K U R S A
C I O Y A C F O D G F M A C I
Y T K R L S C I N I O V P R D
S S K T D C C T A S I R H E E
P O H A N I Y I S E C M Y E M
C N F I A D M R T D U P H H N D
Y G T D H E F T N E P T X Z S A
W A W O C M H U E M T M E Y H M
M I P P E A J N V U M E T I Q L
I D O S E R W C E T E V O D I
N A Y W P A P V R S Q V D V E F
F Y D F S P Y A Q O V D V E F
Y G O L O I C O S C I L B U P

Thinking about your future options?

At Queen Margaret University we understand thinking about your future may seem daunting.

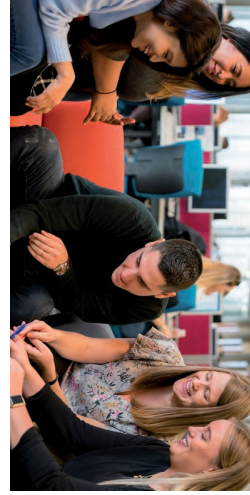
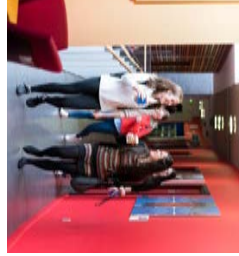
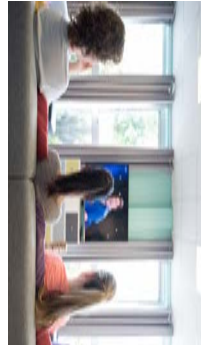
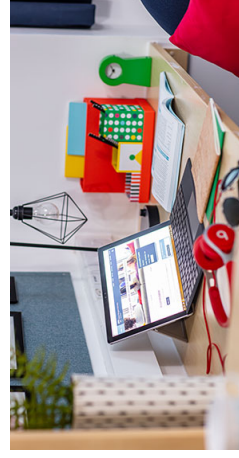
The team at QMU are here to give you advice and guidance and help you choose the right subjects at school to give you the most options for your future. See the table overleaf for more information.

The Widening Participation and Outreach Team works closely with schools across Scotland throughout the year. We are available to attend careers events and we can deliver a wide range of workshops and presentations at your school.

Visit the QMU Campus

If you would like to visit the QMU campus, we can organise a tour where you can take part in interactive workshops, meet some of our current students and see our campus facilities.

To organise a visit, send an email to: schools@qmu.ac.uk.



Queen Margaret University, Edinburgh



@QMUSchools



@QMUSchools

Follow us on social media:

Ranked top modern university in Scotland in the Times Good University Guide 2020

For more information, please contact:
schools@qmu.ac.uk
www.qmu.ac.uk/qmu-and-the-community/working-with-schools



Queen Margaret University
EDINBURGH



Queen Margaret University
EDINBURGH

Undergraduate Courses at QMU and Entry Requirements

Different courses at university have different subject and grade entry requirements. Below is a list of requirements for each course to help you choose which subjects you might like to study at school or college.



Psychology, Sociology and Education				
COURSE TITLE	ENTRY REQUIREMENTS		SUBJECTS REQUIRED/RECOMMENDED AT HIGHER LEVEL	NAT 5 REQUIREMENTS
BSc/BSc (Hons) Psychology	SQA Highers		Would be beneficial to have a Higher in one of these: Psychology/Sociology/Philosophy/English	Required: English Preferred: Maths
	Standard: BBCC	Minimum: BCCC		
BSc/BSc (Hons) Psychology and Sociology	SQA Highers		Recommended Highers: Psychology/Sociology/Philosophy/English/Modern Studies	Required: English Preferred: Maths
	Standard: BBCC	Minimum: BCCC		
BSc/BSc (Hons) Public Sociology	SQA Highers		Recommended Highers: Psychology/Sociology/Philosophy/English/Modern Studies	Required: English Preferred: Maths
	Standard: BBCC	Minimum: BCCC		
BA (Hons) Education Studies (Primary)	SQA Highers		Required at Higher: English at B Grade Recommended Highers: Psychology/Sociology/Philosophy/English/Modern Studies	Required: Maths
	Standard: ABBC	Minimum: BBBB		
BA (Hons) Education Studies	SQA Highers		Recommended at Higher: English	Required: English Preferred: Maths
	Standard: BBCC	Minimum: BCCC		

Film, Media and Communications				
COURSE TITLE	ENTRY REQUIREMENTS		SUBJECTS REQUIRED/RECOMMENDED AT HIGHER LEVEL	NAT 5 REQUIREMENTS
BA/BA (Hons) Film and Media	SQA Highers		Recommended Highers: English/Media Studies or Film Studies	Required: English Preferred: Maths
	Standard: BBBB	Minimum: BBCC		
BA/BA (Hons) Media and Communications	SQA Highers		Recommended Highers: English or Media Studies	Required: English Preferred: Maths
	Standard: BBBB	Minimum: BBCC		
BA/BA (Hons) Public Relations and Marketing Communications	SQA Highers		Recommended Highers: English or Media Studies	Required: English Preferred: Maths
	Standard: BBBB	Minimum: BBCC		

Business, Events and Hospitality Management				
COURSE TITLE	ENTRY REQUIREMENTS		SUBJECTS REQUIRED/RECOMMENDED AT HIGHER LEVEL	NAT 5 REQUIREMENTS
BA/BA (Hons) Business Management	SQA Highers		Would be beneficial to have a Higher in one of these: Business/Administration	Required: English Preferred: Maths
	Standard: BBBC	Minimum: BCCC		
BA/BA (Hons) Business Management with Enterprise (Apply via BA (Hons) Business Management N100 in UCAS)	SQA Highers		Would be beneficial to have a Higher in one of these: Business/Administration	Required: English and Maths
	Standard: BBBC	Minimum: BCCC		
BA/BA (Hons) Business Management with Finance (Apply via BA (Hons) Business Management N100 in UCAS)	SQA Highers		Would be beneficial to have a Higher in one of these: Business/Administration	Required: English and Maths
	Standard: BBBC	Minimum: BCCC		
BA/BA (Hons) Business Management with Marketing (Apply via BA (Hons) Business Management N100 in UCAS)	SQA Highers		Would be beneficial to have a Higher in one of these: Business/Administration	Required: English and Maths
	Standard: BBBC	Minimum: BCCC		
BA/BA (Hons) Events and Festival Management	SQA Highers		Would be beneficial to have a Higher in one of these: Business/Administration	Required: English Preferred: Maths
	Standard: BBBC	Minimum: BCCC		
BA/BA (Hons) International Hospitality and Tourism Management	SQA Highers		Would be beneficial to have a Higher in one of these: Business/Travel and Tourism/Administration	Preferred: English and Maths
	Standard: BBBC	Minimum: BCCC		

Allied Health Professions and Health Sciences				
COURSE TITLE	ENTRY REQUIREMENTS		SUBJECTS REQUIRED/RECOMMENDED AT HIGHER LEVEL	NAT 5 REQUIREMENTS
(MDiet) Master of Dietetics	SQA Highers		Required at Higher: Chemistry and Biology with one other science (Maths or Home Economics recommended)	Required: English and Maths
	Standard: BBBC	Minimum: BCCC		
(M Nurse) Master of Nursing	SQA Highers		Required Highers: One science subject from Chemistry/Physics/Biology/Human Biology, and one discursive subject from English/Philosophy/History/Modern Studies/Religious and Moral Education	Required: English and Maths at a B pass (if not studied at Higher level)
	Standard: BBBB	Minimum: BBBC		
(MOccTher) Master of Occupational Therapy	SQA Highers		Recommended at Higher: a discursive subject Preferred: English Accepted: History or Sociology	Required: English and Maths
	Standard: BBBB	Minimum: BCCC		
BSc Paramedic Science	SQA Highers		Required Highers: Human Biology or Biology and a discursive subject from English/History/RMPS/Modern Studies/Philosophy	Required: English and Maths Preferred: One other Science if not studied at Higher level
	Standard: BBBB	Minimum: ABBBB		
(MPhys) Master of Physiotherapy	SQA Highers		Required Highers: English plus two Sciences from Biology/Chemistry/Physics/Maths	Required: English and Maths (preferably at B grade)
	Standard: AABBB	Minimum: BBCC		
(MPod) Master of Podiatry	SQA Highers		Required Highers: One Science from Biology/Human Biology/Chemistry/Physics/Maths	Required: English and Maths
	Standard: BBBC	Minimum: BCCC		
(M DRad) Master of Diagnostic Radiography	SQA Highers		Required Highers: One Science from Biology/Human Biology/Chemistry/Physics/Maths	Required: English plus two sciences
	Standard: BBBB	Minimum: BCCC		
(M TRad) Master of Therapeutic Radiography	SQA Highers		Required Highers: One Science from Biology/Human Biology/Chemistry/Physics/Maths	Required: English plus two sciences
	Standard: BBBC	Minimum: BBCC		
(MSpeech) Master of Speech and Language Therapy	SQA Highers		Required Highers: At least one of the following - Biology/Chemistry/Physics/Psychology/Maths	Required: English and Maths
	Standard: AABBB	Minimum: ABBBB		
BSc/BSc (Hons) Nutrition	SQA Highers		Required Highers: Chemistry/Biology and preferably one other science (may include Maths/Home Economics)	Required: Chemistry/Biology/English and Maths
	Standard: BBBC	Minimum: BCCC		
BSc/BSc (Hons) Physical Activity, Health and Wellbeing	HNC: Achieving B in Graded unit for entry into Year 2		See college prospectus for HN entry requirements. Colleges will normally require two or more Highers	
	HND: achieving CB in graded units for entry into Year 3			

Drama and Performing Arts				
COURSE TITLE	ENTRY REQUIREMENTS		SUBJECTS REQUIRED/RECOMMENDED AT HIGHER LEVEL	NAT 5 REQUIREMENTS
BA/BA (Hons) Acting and Performance	HND: Acting and Performance/Musical Theatre		See college prospectus for HN entry requirements. Colleges will normally require two or more highers	See college website for HN entry requirements
	Achieving B in graded unit in 2 nd year			
	2 year degree in relevant subject also considered			
BA/BA (Hons) Performance	HND: Acting and Performance/Musical Theatre		See college prospectus for HN entry requirements. Colleges will normally require two or more highers	
	Achieving B in graded unit in 2 nd year			
	2 year degree in relevant subject also considered			
BA/BA (Hons) Costume Design and Construction	SQA Highers		Two subjects required from: English/History/Drama Recommended Highers: Art/Design or Textiles	Required: Maths and English
	Standard: BBBB	Minimum: BBCC		
BA/BA (Hons) Drama	SQA Highers		Required Highers: English and/or Drama	Required: English Preferred: Maths
	Standard: AABB	Minimum: BBBB		
BA/BA (Hons) Theatre and Film	SQA Highers		Recommended Highers: English/Drama or Media Studies	Required: English Preferred: Maths
	Standard: AABB	Minimum: BBBB		