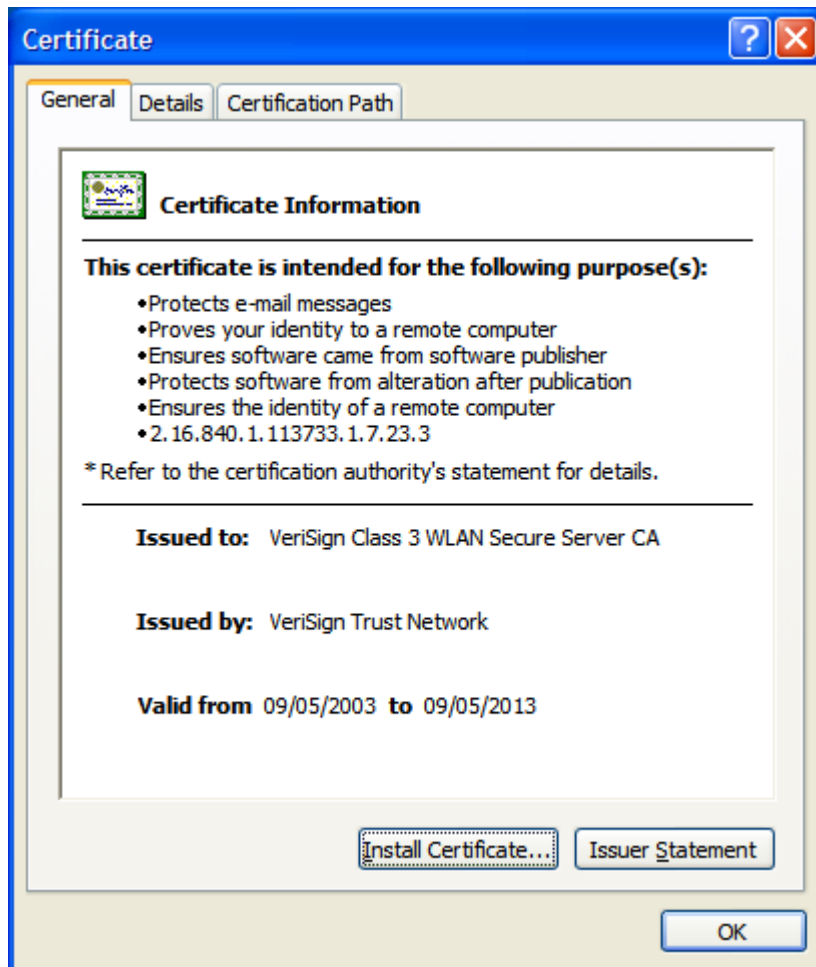


Importing the Intermediate Certificate for Eduroam. (Windows XP - 24/06/2009)

Client certificates used to chain directly of the root SSL certificate. However it has long been recognised that this is bad practise, when the root certificate is compromised then the whole chain of trust becomes unreliable. To get round this problem companies supplying SSL certificates are now issuing intermediate certificates. In the event of a problem with the certificate chain is it more secure to revoke the intermediate certificate and issue a new one. The Eduroam certificate relies on an intermediate certificate which must be installed to complete the chain of trust.

The intermediate certificate can be found on the QMU Eduroam page <http://www.qmu.ac.uk/it/eduroam/default.htm>. Highlight the link, right-click, then select "save target as" option and save to somewhere where you can find it again.

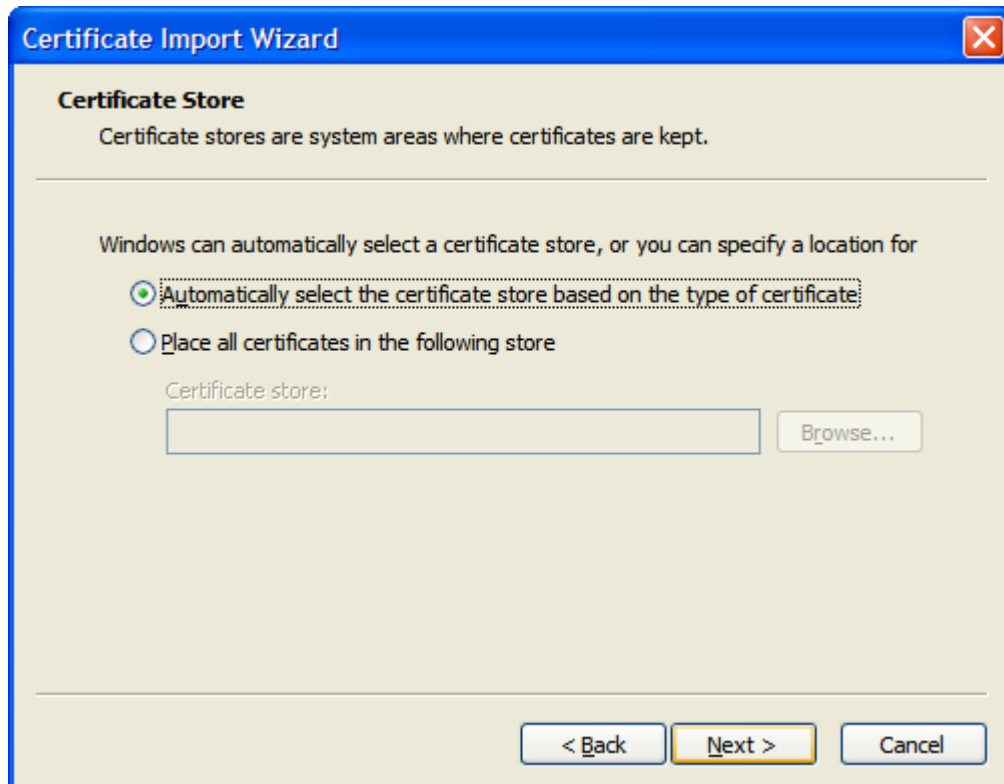
Double click the newly download certificate.



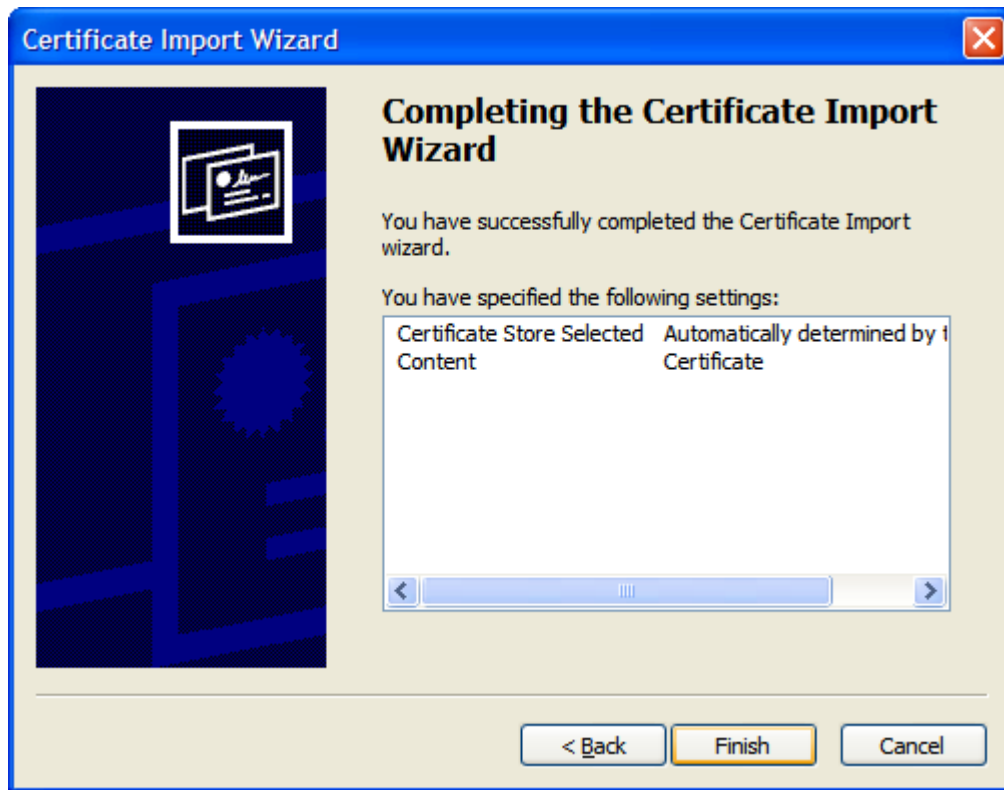
It should be as above. Select the install Certificate button. This will launch the Certificate Import wizard.



Select Next. The next window specifies where the certificate should be installed – just accept the default option.



Select next.



Select Finish and the import should be successful.

